

# 'Star-Ship' Cabin Plans

## Owner's One-bedroom Suite **CAT SA**



Our Owner's One-bedroom Suites boast their very own bedroom which closes off from the rest of the suite; a separate lounge area; and a fantastic outdoor balcony complete with open-air system, allowing you to enjoy the views of your surroundings whatever the weather.

These suites also include a selection of special features, a spacious bathroom, a luxurious walk-in wardrobe, a complimentary Nespresso machine and a complimentary mini-bar restocked daily with wine, beer and soft drinks. So that you can keep up-to-date with the latest news, you'll have an iPad to make use of throughout your cruise. And in order to offer you a more intimate dining experience, you can order a continental breakfast, pre-dinner canapés and after-dinner sweet treats to enjoy in the privacy of your suite's lounge or outdoors on your balcony.

### **NEW** Riverview Suite\* **CAT RA**

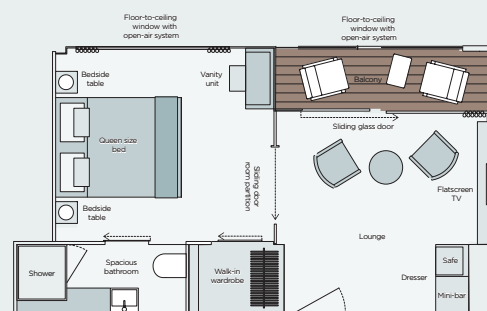
Our Riverview Suites are located at the back of our Emerald Radiance ship, allowing them to boast floor-to-ceiling windows and our innovative indoor balcony system for endless views at any time of day. Although the layout and size of a Riverview Suite is unique, you will enjoy many of the fantastic inclusions featured in our Owner's One-bedroom Suite (above).

\*For full details of the Riverview Suite inclusions and layout, please call or visit [emeraldwaterways.co.uk/our-ships](http://emeraldwaterways.co.uk/our-ships)

**Important information:** The cabin plans and photographs are an indication only and may vary from ship to ship.

### Your Owner's One-bedroom Suite

- 26m<sup>2</sup> / 280ft<sup>2</sup> - 30.6m<sup>2</sup> / 330ft<sup>2</sup>
- Outdoor private balcony with open-air system
- Separate bedroom and lounge area
- Bathroom with shower, indulgent toiletries, hair dryer, on-board complimentary bathrobes and slippers
- Walk-in wardrobe
- Complimentary in-suite mini-bar, restocked daily with wine, beer and soft drinks
- Complimentary bottled water, restocked daily
- Complimentary Nespresso machine
- Complimentary Wi-Fi
- Use of an iPad
- Queen-size or twin hotel-style beds
- Pillow menu
- Telephone
- Safe for your valuables
- Individual climate control
- Flat screen TV and infotainment system
- Continental breakfast, pre-dinner canapés and after-dinner sweet treats served in your suite
- Four items of laundry a day
- Invite to dinner at the Captain's Table



## Grand Balcony Suite **CAT 5**

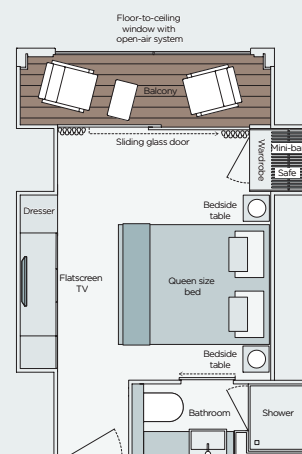


Each of our Grand Balcony Suites boasts a number of fantastic inclusions, such as an in-suite Nespresso machine - an added home comfort that means that you can relax with a hot beverage at any time, day or night. You'll also have the option to order a delicious continental breakfast to enjoy on the balcony. And for the perfect start and finish to your evening meal, you can enjoy pre-dinner canapés and after-dinner sweet treats courtesy of your exclusive room service, which is included in the price of your suite.

Grand Balcony Suites also offer a spacious outdoor balcony, allowing you to make the most of your cruise's beautiful landscapes and take in the fresh air. And should the weather take a turn for the worse, you needn't worry because all it takes is the touch of a button and our state-of-the-art open-air system window rises from the balcony and encloses the area so that you can still sit out and admire the views together, or unwind with a drink.

### Your Grand Balcony Suite

- 15m<sup>2</sup> / 161ft<sup>2</sup> - 19.5m<sup>2</sup> / 210ft<sup>2</sup>
- Outdoor private balcony with open-air system
- Bathroom with shower, indulgent toiletries, hair dryer, on-board complimentary bathrobes and slippers
- In-suite mini-bar available at own expense
- Complimentary bottled water, restocked daily
- Complimentary Nespresso machine
- Complimentary Wi-Fi
- Queen-size or twin hotel-style beds
- Pillow menu
- Telephone
- Safe for your valuables
- Individual climate control
- Flat screen TV and infotainment system
- Continental breakfast, pre-dinner canapés and after-dinner sweet treats served in your suite
- Two items of laundry a day



# 'Star-Ship' Cabin Plans

## Emerald Panorama Balcony Suite CAT C CAT B CAT A CAT R CAT P

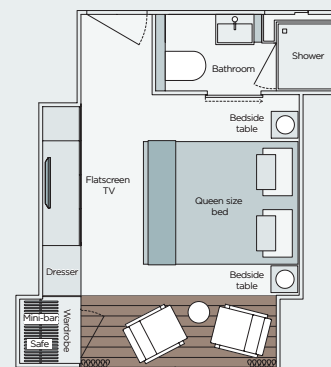


We've put every effort into designing beautiful staterooms and suites, selecting the most elegant décor and furnishings to create a haven for you to relax in as you sail through the most picturesque landscapes. But with our Emerald Panorama Balcony Suite, we've gone one step further and created a completely new type of suite that's unique to European river cruising. These spectacular suites boast our revolutionary indoor balcony design, complete with decking area, table and chairs - generating an entirely new space for you to enjoy the landscapes you pass. With the touch of a button, the upper part of the suite's floor-to-ceiling window drops down to unveil uninterrupted views of the stunning scenery, opening up the suite and bringing the outdoors in.

In our Emerald Panorama Balcony Suites, you'll find a mini-fridge - perfect for storing any gifts that need keeping cool, such as chocolates, confectionery or special local drinks. You can use your mini-fridge to keep your complimentary bottled water cool too. You'll also find a safe for your valuables and plenty of storage.

### Your Emerald Panorama Balcony Suite

- 15m<sup>2</sup> / 161ft<sup>2</sup> - 16.7m<sup>2</sup> / 180ft<sup>2</sup>
- Indoor balcony with open-air system
- Bathroom with shower, indulgent toiletries and hair dryer
- Complimentary bottled water, restocked daily
- Complimentary Wi-Fi
- Queen-size or twin hotel-style beds
- Telephone
- Safe for your valuables
- Individual climate control
- Flat screen TV and infotainment system
- Mini-fridge



Floor-to-ceiling window with open-air system

**Important information:** The cabin plans and photographs are an indication only and may vary from ship to ship.

## Emerald Stateroom CAT E CAT D

## Emerald Single Stateroom CAT ES



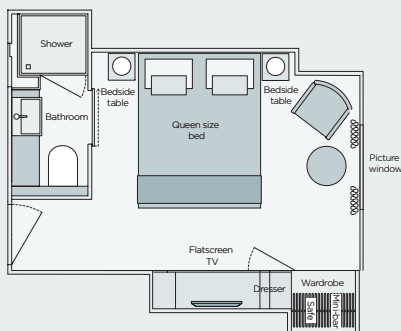
All Emerald Staterooms feature picture windows and a wealth of quality facilities. Plus, they're bigger than the average standard staterooms on the European rivers, providing excellent value for money.

Most of our ships also offer two Emerald Single Staterooms\* featuring picture windows and a wealth of quality facilities (see below). With their deluxe single bed, they provide excellent value for money for guests wishing to travel on their own.

\*Emerald Single Staterooms are not available on the Emerald Radiance.

### Your Emerald Stateroom

- 15.4m<sup>2</sup> / 162ft<sup>2</sup> - 15.7m<sup>2</sup> / 170m<sup>2</sup>
- Picture window (150cm x 34cm)
- Bathroom with shower, indulgent toiletries and hair dryer
- Complimentary bottled water, restocked daily
- Complimentary Wi-Fi
- Queen-size or twin hotel-style beds
- Telephone
- Safe for your valuables
- Individual climate control
- Flat screen TV and infotainment system
- Mini-fridge



### Your Emerald Single Stateroom

- 10.1m<sup>2</sup> / 105ft<sup>2</sup> - 12m<sup>2</sup> / 130m<sup>2</sup>
- Picture window
- Bathroom with shower, indulgent toiletries and hair dryer
- Complimentary bottled water, restocked daily
- Complimentary Wi-Fi
- Telephone
- Safe for your valuables
- Individual climate control
- Flat screen TV and infotainment system
- Mini-fridge

